



Hybrid squeegee head

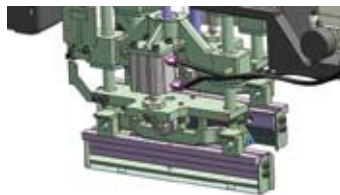


●Screen Printer

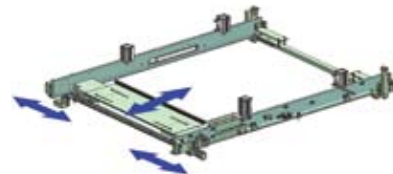
•Realization of high quality, high throughput and quick setup with simple operation

Realizes high quality and high throughput

Improves setup efficiency significantly



Hybrid squeegee head



Universal stencil holder



* It may not conform to Machinery Directive and EMC Directive in case of optional configuration and custom-made specification.

SP70
 Model ID

Model No. NM-EJP3A

High-Quality Printing
 solutions
 for world-class
 manufacturing

| | |
|------------------------------|--|
| Model ID | SP70 |
| Model No. | NM-EJP3A |
| PCB dimensions (mm) | L 50 × W 50 to L 510 × W 460 *1 |
| Cycle time | 6.8 s + printing time (Board size : 510 × 460 mm), 5.2 s + printing time (Board size : 330 × 250 mm) |
| Printing accuracy | ±20 μm |
| Repeatability | ±5.0 μm |
| Screen frame dimensions (mm) | L 736 × W 736 L 650 × W 550, L 600 × W 550 |
| Electric source | 3-phase AC 200 V *2 2.0 kVA *3 |
| Pneumatic source | 0.5 MPa, 30 L/min (A.N.R.) |
| Dimensions (mm) | W 1 680 × D 2 070 *4 × H 1 430 *5 |
| Mass | 1 730 kg |

*Values such as cycle time and accuracy may vary depending on operating conditions. *Please refer to the "Specification booklet" for details.

*1: Applicable PCB sizes: max. L 580 mm x W 508 mm

*3: Including blower and vacuum pump

*5: Excluding monitor and signal tower

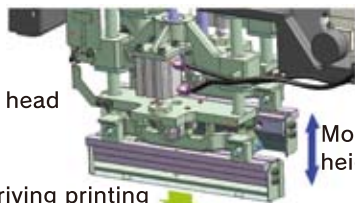
*2: Compatible with 3-phase 220 / 380 / 400 / 420 / 480 V

*4: Handle external dimension

Higher quality & higher productivity . . Further pursuing of high quality printing with "the cornerstone of quality is printing"

● Excellent filling capability and high productivity

In addition to constant printing, motor control of vertical squeegee motions enables digital control at the time of the squeegee's uprising and realizes higher productivity. This head prevents solder overflow to outside the squeegee and solder hanging causes air mixing.



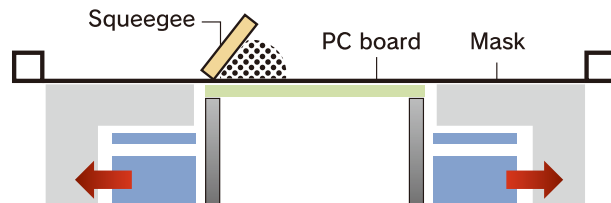
Hybrid squeegee head

Motor driving squeegee height control

Cylinder driving printing pressure control

● PC board edge support

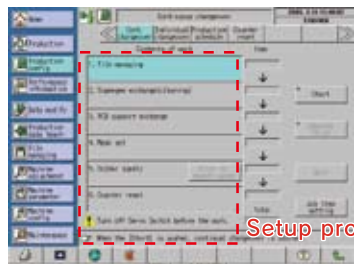
Stable solder shapes can be printed on the entire board surfaces owing to supporting that far reaches board edges.



Easy operation . . Further pursuit for changeovers with higher speed

● Changeover navigation

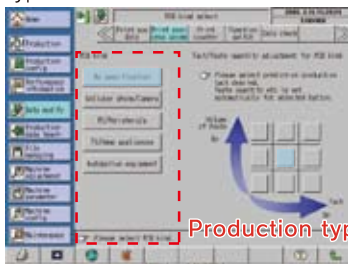
Display setup procedure can reduce preparation time for production



Setup procedure

● Easy operation

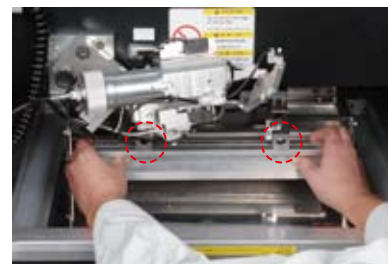
Printing conditions can be set up automatically by specifying production types



Production types

● One-touch operation for squeegee replacement

Squeegees can be replaced by one-touch operation



A wide range of applications

● Automatic solder supply (option)

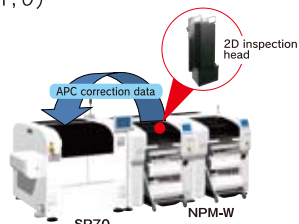
Continuous printing for long periods of time is possible with automatic solder supply on stencils

● Solder inspection function (option)

Misalignment, bridging, blur and oozing are inspected with the PCB recognition camera.

● Inspection result feedback support (option)*

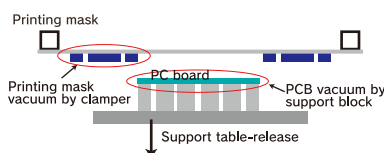
According to the correction data of shifted printing analyzed by solder paste inspection (APC correction data), it corrects printing positions (X, Y, θ)



*3D inspection equipment of another company can be also connected. Please inquire with your sales representative for more details.

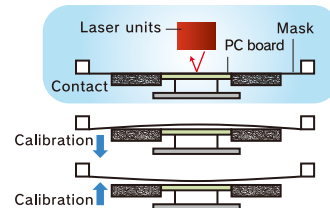
● Mask vacuum support mask-release (option)

Printing mask can be vacuumed during printing and support-table release. It can enable more stable printing by eliminating shift and stick of a mask.



● Stencil height detection (option)

Laser processes can optimize a contact of PC boards with stencils so that stable printings can be provided



⚠ Safety Cautions

● Please read the User's Manual carefully to familiarize yourself with safe and effective usage procedures.

● To ensure safety when using this equipment all work should be performed according to that as stated in the supplied Operating Instructions. Read your operating instruction manual thoroughly.



Panasonic Group products are built with the environment in mind.
<http://panasonic.net/eco/>



Panasonic Group builds Environmental Management System in the factories of the world and acquires the International Environmental Standard ISO 14001:2004.

Inquiries...

Panasonic Factory Solutions Co., Ltd.
Corporate Sales Division

1375 Kamisukiawara, Showa-cho, Nakakoma-gun, Yamanashi 409-3895, Japan
TEL +81-55-275-9148
FAX +81-55-275-6269

All data as of April 1, 2013

Ver. April 1, 2013