





This inspection system is equipped with save captured image(s) automatically and bar code serial reading function as standard. Also plug-in software can be developed suitable for your traceability



Visual inspection for PCBA

WV-1806Q-330 Series



SPECIFICATION			
Type		WV-1806Q-330CVX (JP) WV-1806Q-330CV (JP) / Conveyor mounted	WV-1806Q-330 (JP) WV-1806Q-330 (EU)
Target	PCB size	50mm(X), 50mm(Y) – 330mm(X), 250mm(Y) Thickness of board 0.4mm - 3.0mm	
	Component size	Minimum chip : 0.6mm(X), 0.3mm(Y) Max Height : 20mm Max number of components : No limit	
	Detection target	Shortage , direction , deviation , upside-down, wrong parts , solder-ball , bridge , different colors , etc.	
Imaging range	Camera	18 MPixel USB3.0 CMOS x 4 cameras	
	Lens	Focal length 6mm F1.8 Resolution 5 MPixel	
Optical resolution	Approx.37 μm/pixel		
Inspection time	5~20 seconds (Variable according to area and mesh size)		
Illumination	High brightness white flat LEDx4 directions		
PC	CPU: Intel Core-i5 Memory : 8 Gbytes OS: Windows10		
Monitor	24 inch Full-HD (HDMI connection)		
Power supply	AC 100 V 50 / 60 Hz (JP)	AC 100 V 50 / 60 Hz (JP) Max.DC24 V , 42 W (EU)	
Operating temperature range	5 °C~40 °C		
Machine size (mm)	L 640mm , D 1200mm , H 1250mm	L 560mm , D 826mm , H 420mm	
Weight (kg)	CVX type : Approx. 85 CV type : Approx. 120 (Conveyor mounted)	Approx. 20	

WEBSITE

<https://www.wvision.co.jp/>

CUSTOMER SUPPORT

support@wvision.co.jp

- For pricing and subscription, please contact the agency below
- Some product photos in this catalog may differ from actual products
- Some specifications in this catalog may differ from actual products

Please ask this agency for sample verification and quotation



Hotaka5951-1 301 , Azumino , Nagano 399-8303



- ✓ **High detection capability**
Misalignment, missing parts , reverse mounting, bridge, etc. 0201(in) chip compatible
- ✓ **Compact & Low price**
Mechanical-less and lightweight design
- ✓ **Inspection ready 10 min**
Inspection setting is completed only by mouse operation

Effective in high-mix low-volume production sites

Lightweight desktop model.

Multiple lines can be inspected by not incorporating them in the line.

WV-1806Q-330

- This makes it easy to inspect the inserted parts and solder side after DIP
- This shortens the inspection time after mounting
- It can be used universally to support visual inspection



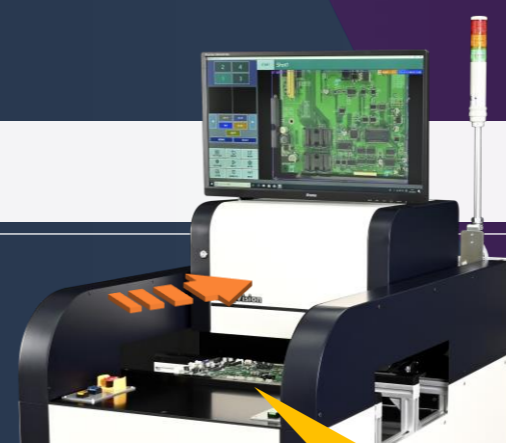
Start inspection just by closing the slide table

Pre-Reflow Inspection model

There are two types: one type with a built-in conveyor and another type without the conveyor, so it does not require layout change. The "slide head" moves backwards for easy access to the board.

WV-1806Q-330CV(X)

- This can detect defect before soldering, so it can eliminate some repair and secondary defects
- And this is useful to catch upfront trouble quickly
- That makes it easy to find the difference from the previous one by checking first board after switching models

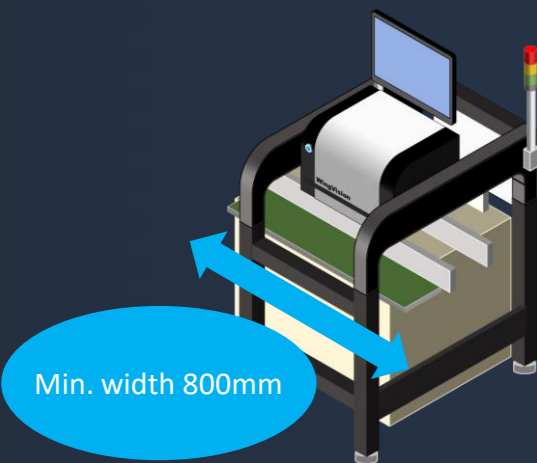


Easy board access

The "slide head" * makes it easy to correct misaligned parts, put them on trial production, and take temperature profiles.

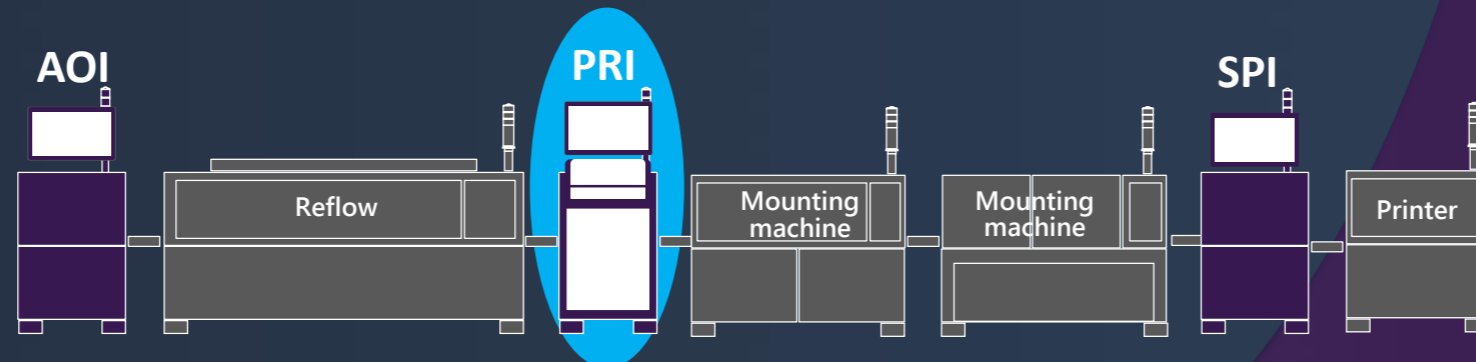
* Patent pending

PRI reduces inspection items at AOI. Not only board repair costs but also program setup will be reduced. It can be expected to improve whole equipment efficiency.



Min. width 800mm

Easy to install without changing the layout, it is possible existing conveyors to be used as before

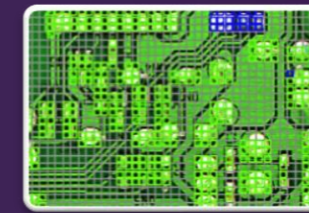


No longer need a parts library so Inspection setting is easy !

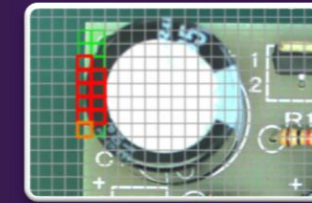
"Mesh Matching" *, is a unique software that can be easily used in the field . "Mesh matching" meshes the image by a uniform size mesh and compares the same position mesh between the good image and the inspection image. If it is less than the threshold, inspection detects and shows NG on a display. No more need any specialized skills. And it can be completed the setup in a short time.

* Japanese Patent No.62333824

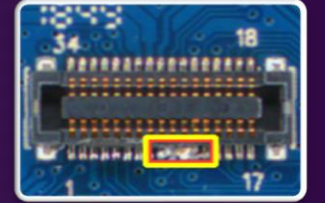
【 Inspection example of type 330 】



[Solder side of board inspection]



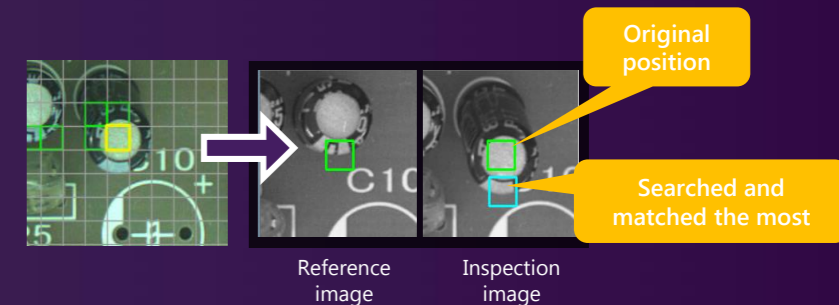
[Inserted parts inspection]



[Mounted parts inspection]

"Mesh matching" achieves flexibility and high detection reliability

"Mesh Matching" can inspect normally, even if target parts don't have enough positional accuracy. Because the maximum matching point is searched within acceptable search area. This provides both flexibility and high detection reliability.



"AI-Mesh" sets inspection parameters automatically

"AI-Mesh" compares the unmounted board with the mounted reference board, and automatically sets the necessary parameters. It achieves saving time for setting and high-precision setting.

