

Type: 2-axes centring clamp

VZA

View
on-line:



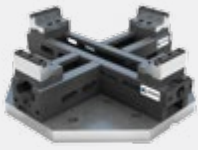
System:

Complex parts reliably brought to
the centre

Versions:

Customised...

... bed lengths upon request.



VZA

VZA – clamping right in the centre: Highest retention forces and precision for maximum clamping performance!

Clamping range up to 560 mm

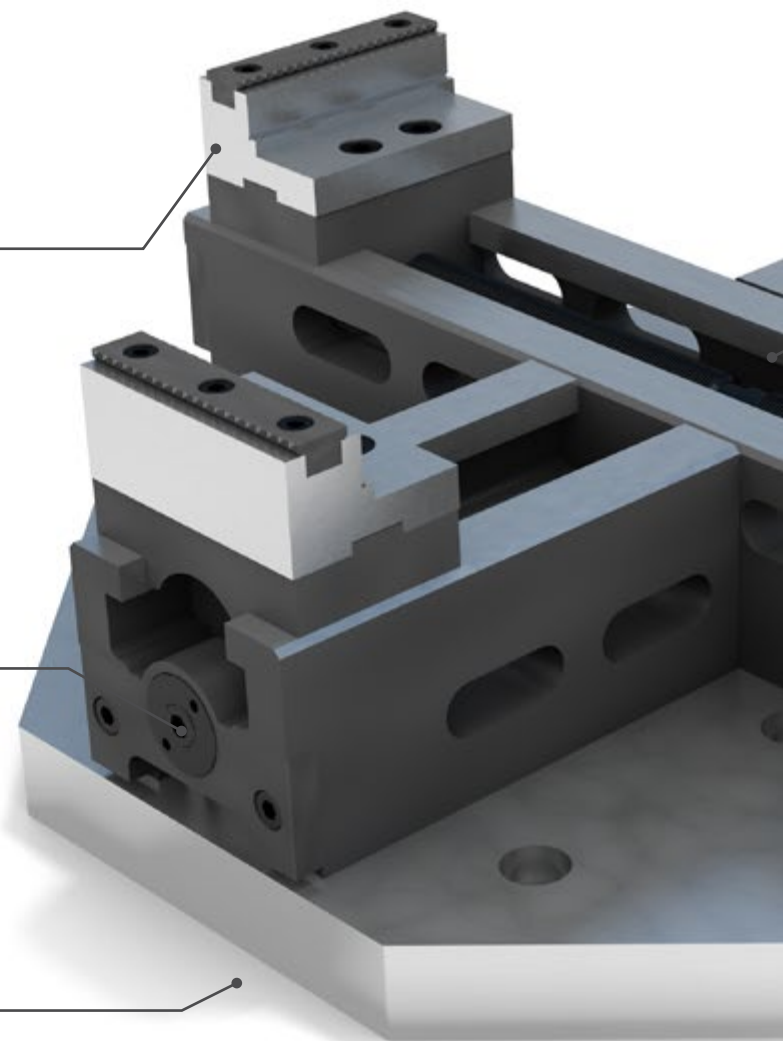
Workpieces up to Ø 560 mm can be clamped with a bed length of 600 mm by means of jaws.

High level of centring accuracy ± 0.02 mm

Two continuous spindles allow maximum precision.

Any zero-point clamping systems

Can be adapted to any zero-point clamping system



Clamping right in the centre: the flexible solution, for example, for the mould maker. You can always clamp your material right in the centre by means of two axes. It couldn't be faster or easier. Any clamping size and base drilling pattern is feasible. Due to their excellent reproducibility, workpieces can be easily removed and reused. In addition, our wide range of jaws offers a number of customised clamping solutions.

Suitable accessories you can find starting from page 96

Central workpiece clamping

Form-locked clamping via 4 sides internally and externally.

Optimal use of space

Best accessibility and optimal machine room utilisation open up countless possibilities.

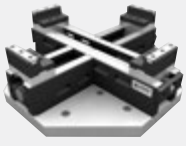
Easy programming

When programming, just start from the centre. It couldn't be easier:

Easy machine table mounting

To be reproducibly mounted on each machine table via centre hole and transverse groove

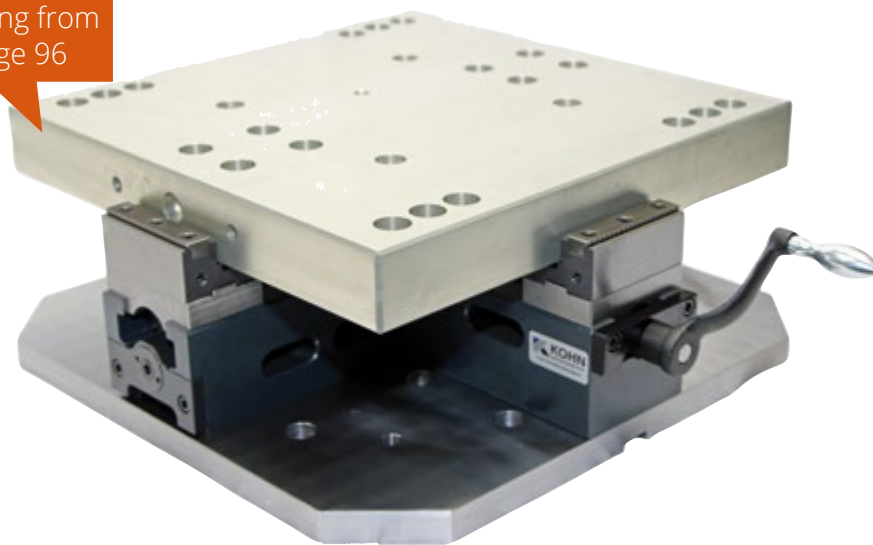




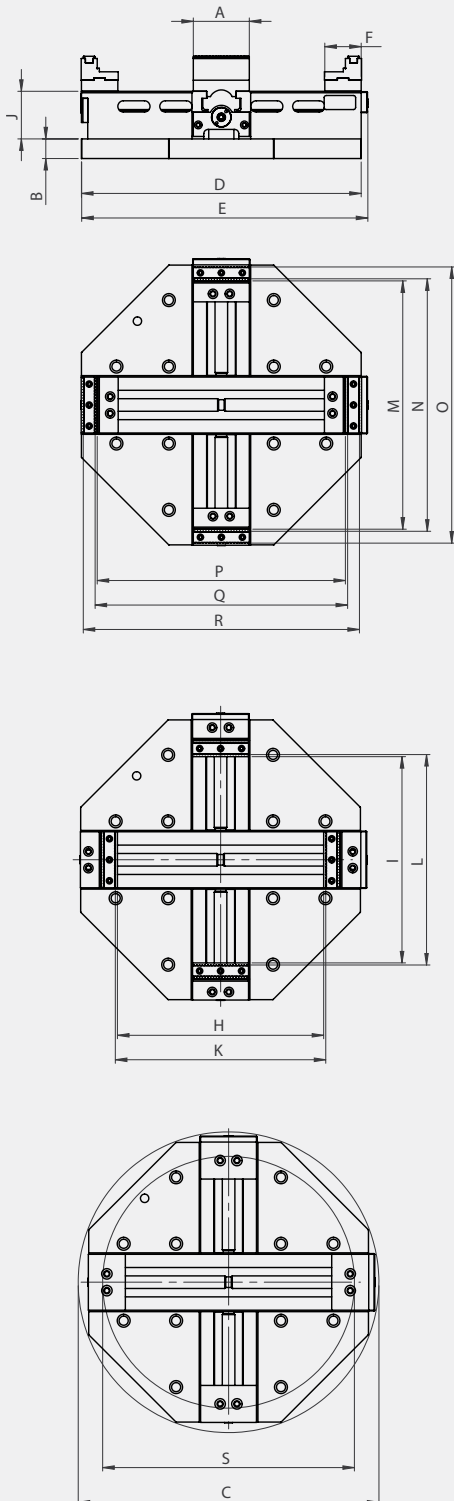
VZA

VZA – from the centre:
for the right base to ensure
the highest-quality workpieces!

Suitable
accessories
you can find
starting from
page 96



Technical drawing

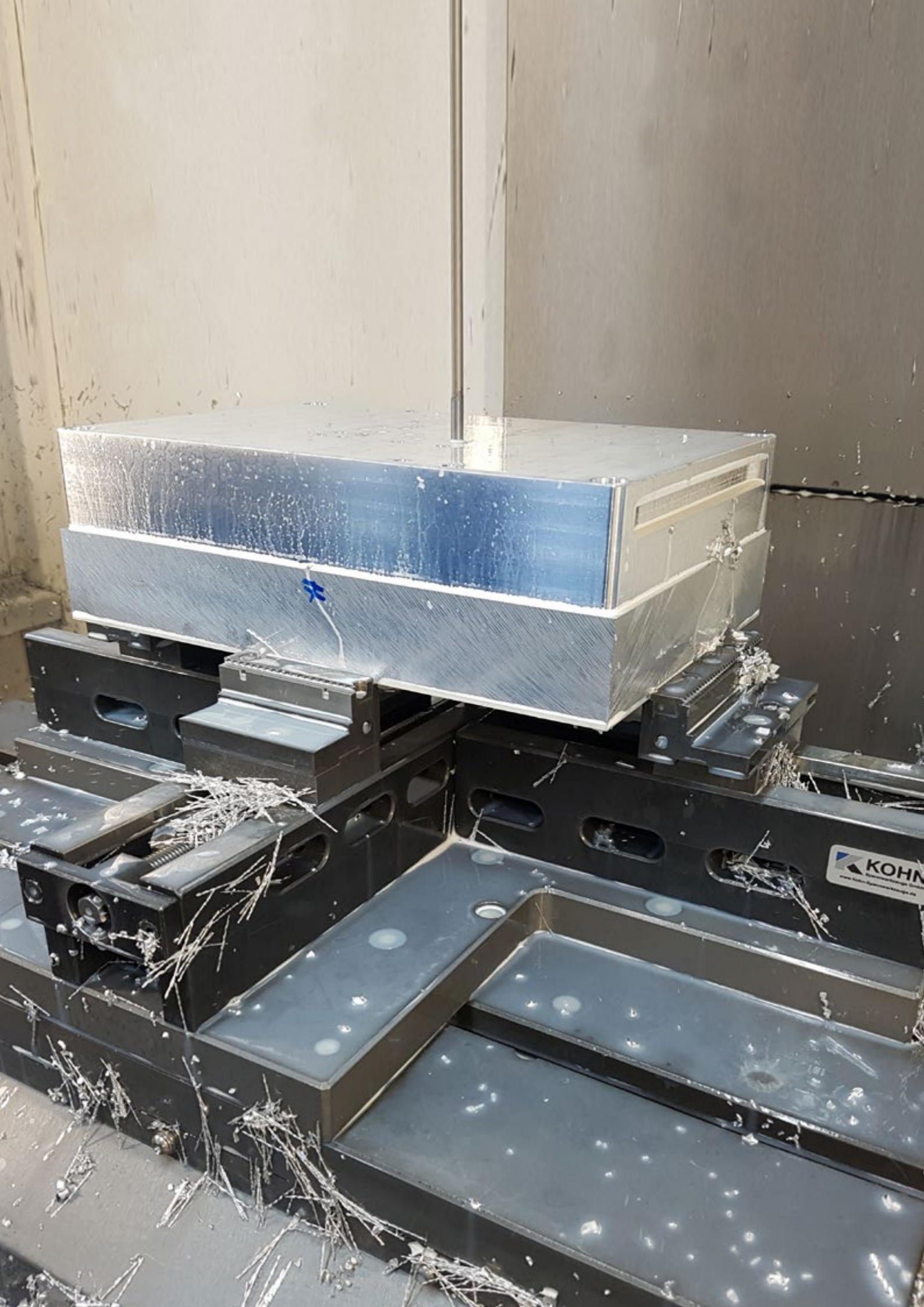


Technical specifications

Jaw width	A	80		
Order No.		V3311	V3313	V3315
Bed length	D	400	500	600
Overall length	E	410x410	510x510	610x610
Interference range	C	Ø430	Ø525	Ø625
Bed height	J h7	68		
Clamping slide	F	52		
Panel height	B	28		
Hexagonal connection SW		12		
Clamping range	H	0-290	0-390	0-490
	I	85-290	85-390	85-490
	K	10-300	10-400	10-500
	L	90-300	90-400	90-500
	M	145-350	145-450	145-550
	N	150-360	150-460	150-560
	O	185-390	185-490	185-590
	P	65-350	65-450	65-550
	Q	70-360	70-460	70-560
	R	100-390	100-490	100-590
	S	Ø100-360	Ø100-460	Ø100-560
Weight	kg	55	70	85
Clamping force at 70 Nm	kN	16		
Centring accuracy	mm	± 0.02		

Basic version: 4 stepped jaw attachments and grip bar, hand crank bent SW 12.

Other bed lengths upon request.



KOHN
www.kohn.com